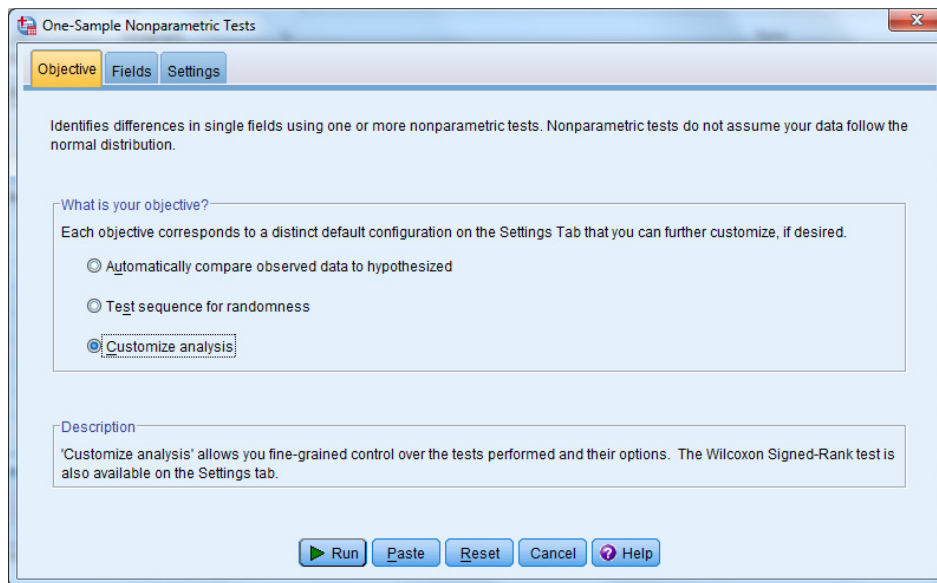


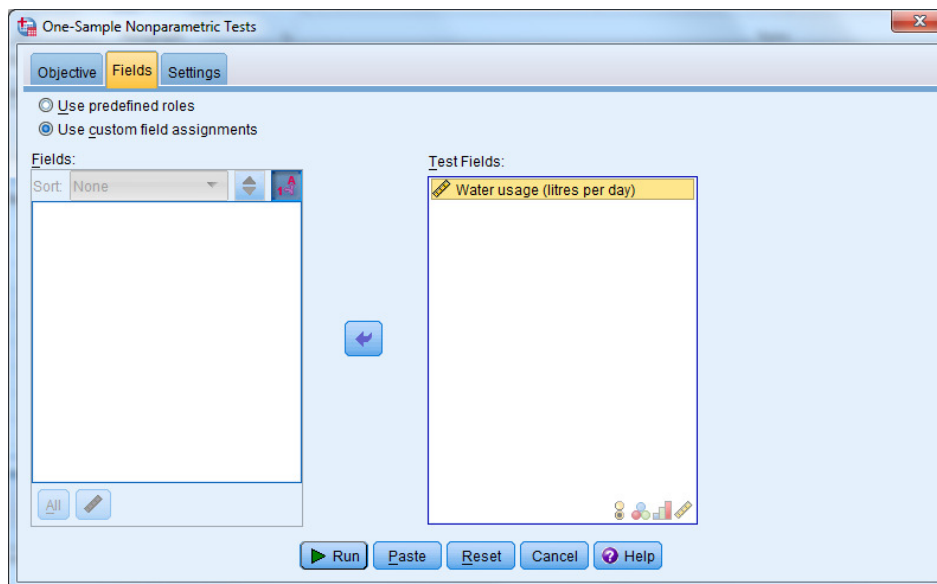
Module 4: Wilcoxon signed-rank test

The test is performed by choosing **Analyze > Nonparametric Tests > One-Sample** and complete the dialog boxes as shown below.

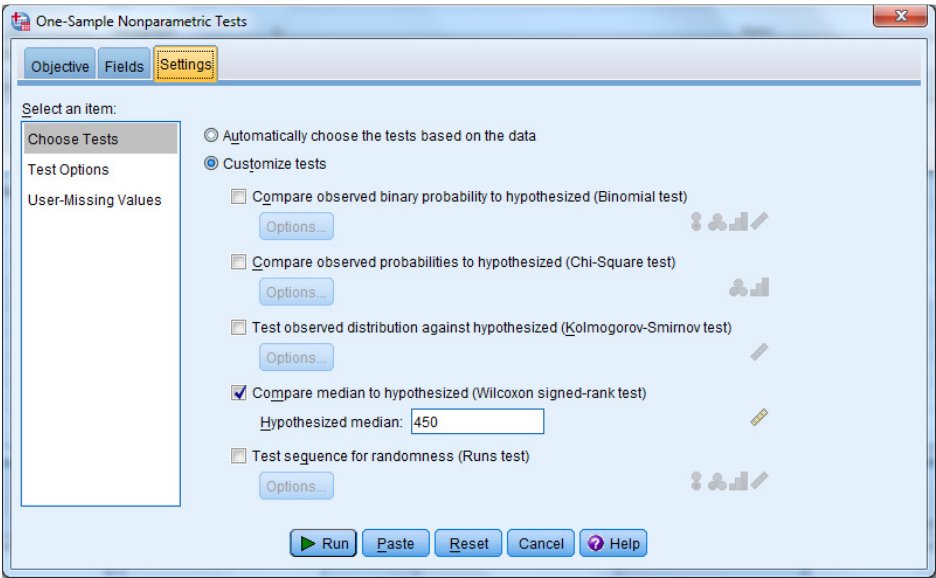
From the **Objective** tab Select **Customize analysis**



In the **Fields** tab move our variable of interest into **Test Fields**, as shown below.



In the **Settings** tab, select **Customize Tests** and tick **Compare median to hypothesized (Wilcoxon signed-rank test)** and enter the median under the null hypothesis

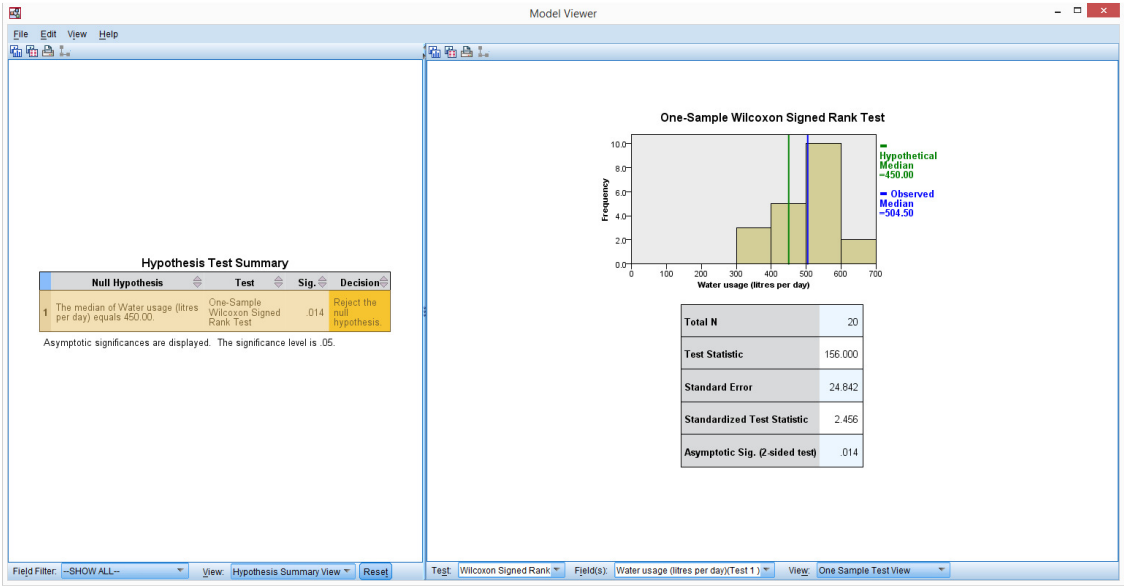


After selecting **Run** the following is the only immediate output.

Hypothesis Test Summary				
	Null Hypothesis	Test	Sig.	Decision
1	The median of Water usage (litres per day) equals 450.00.	One-Sample Wilcoxon Signed Rank Test	.014	Reject the null hypothesis.

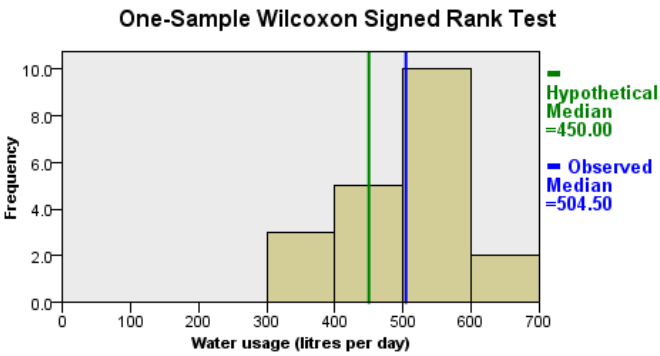
Asymptotic significances are displayed. The significance level is .05.

To get more you have to double click on the above in the SPSS Output window. This opens the Model Viewer window which is an interactive tool for displaying the available model views and editing the look of the model views.



The output in the right hand panel gives us more information on the test. The left hand panel is referred to as the Main view whilst the right hand panel is referred to as the Auxiliary view.

Edit > Copy Main View or **Edit > Copy Auxiliary View** if you want to paste them into say a Word document.



Total N	20
Test Statistic	156.000
Standard Error	24.842
Standardized Test Statistic	2.456
Asymptotic Sig. (2-sided test)	.014